

Step by Step - How to Register and Access the DigiCare Courses

1.Registration in the Courses

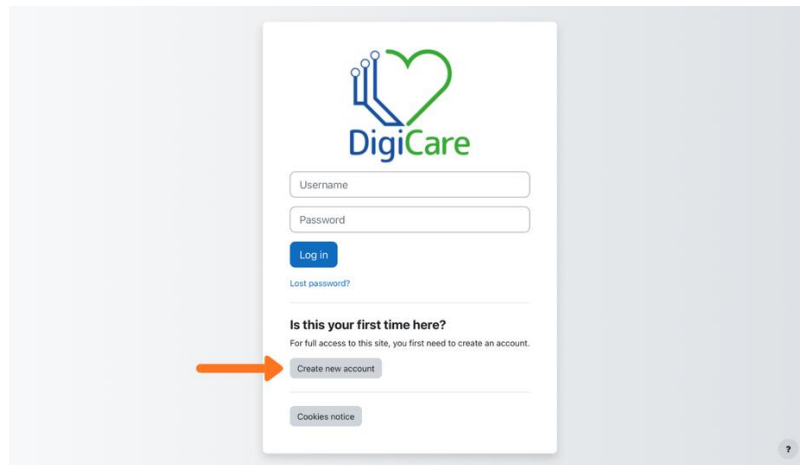
1. Access the DigiCare course platform at: <https://digicaretraining.eu>



2. Click “**Log in**”;

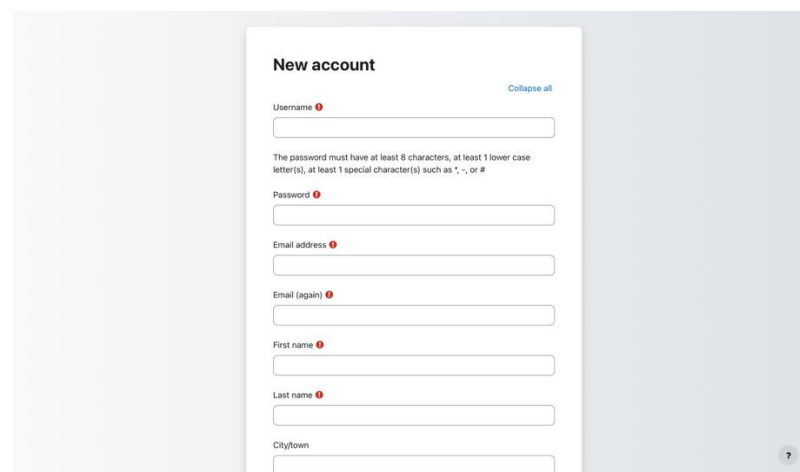


3. Click **“Create a new account”**;



The image shows the DigiCare login and registration interface. At the top is the DigiCare logo, which consists of a stylized heart shape formed by circuit lines. Below the logo are input fields for 'Username' and 'Password', followed by a blue 'Log in' button. A link for 'Lost password?' is positioned below the login button. A section titled 'Is this your first time here?' contains the text 'For full access to this site, you first need to create an account.' and a grey 'Create new account' button, which is highlighted by an orange arrow. At the bottom of the form is a 'Cookies notice' link. A small question mark icon is visible in the bottom right corner of the page.

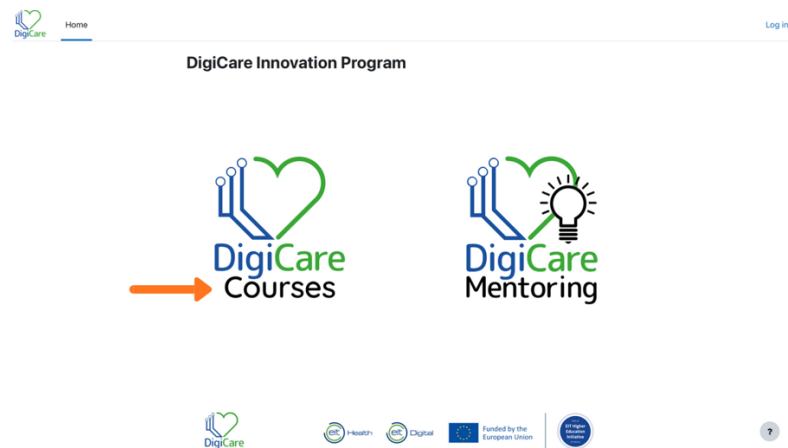
4. **Complete the registration** form with your personal information.



The image displays the 'New account' registration form. The title 'New account' is at the top left, with a 'Collapse all' link to its right. The form includes several input fields: 'Username', 'Password', 'Email address', 'Email (again)', 'First name', 'Last name', and 'City/town'. Each field has a red exclamation mark icon to its left, indicating a required field. A password requirement note is placed above the password field: 'The password must have at least 8 characters, at least 1 lower case letter(s), at least 1 special character(s) such as !, -, or #'. A small question mark icon is located in the bottom right corner of the page.

5. Confirm your account using the verification email you receive;
6. After confirmation, you will be automatically redirected to the platform's homepage, already logged in;

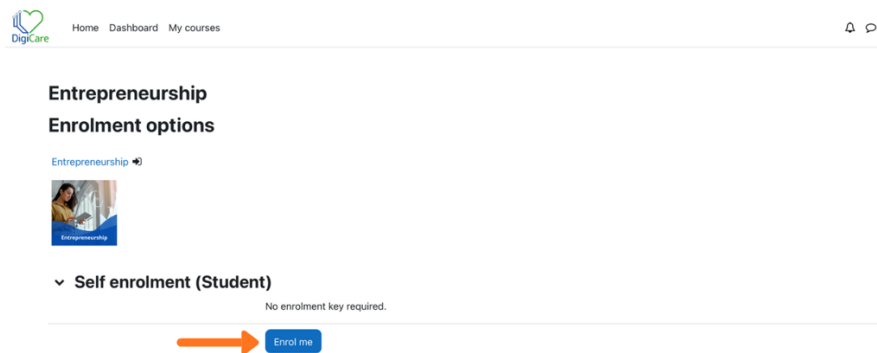
7. Click “**DigiCare Courses**”;



8. Click on the course you wish to attend;



9. Click “Enrol me”;



10. Your registration is now successfully completed.

2. Access to the Course

For future access:

1. Access the DigiCare course platform at: <https://digicaretraining.eu>
2. Click “Log in.”



3. Enter your **username and password** created during registration.

You will then have direct access to the course content and learning activities.